

Introduction

This Application Note describes the trimming technique for DC/DC converter modules using industry standards for output voltage trim. The DC/DC converter module design equations are presented from the data sheets, a circuit model for the DC/DC converter is shown, circuit equations for using a digital pot (DCP) are derived, and resistor values are shown for the two most popular industry standards.

As of this writing, there are two standards for DC/DC converter module that attempt to create standard pin-outs, standard package size, standard electrical specifications, and standard controls such as ON/OFF and output voltage setting.

The first standard was the Point of Load Alliance (POLA) established by Texas Instruments, Artysen, Emerson Astec, Ericsson, and others. A typical POLA DC/DC converter module is the Texas Instruments PTH12050 which features an adjustable output voltage of 0.8V to 5.5V with a 6 amp output current from a +12V input voltage. There are many other variations of this DC/DC converter module for other input voltages and load currents from any vendor that is part of the POLA. Within their product families, all POLA modules are interchangeable and, therefore, second sourced by any POLA vendor. Appendix A shows the typical voltage setting technique and data sheet trim circuit.

The second standard that is more recent is the Distributed-Power Open Standards Alliance (DOSA) founded by Tyco Electronics and SynQor; recent members include Celestica, Delta, Ericsson, and Lambda. Their web site is www.dosapower.com for additional information. A typical DOSA DC/DC converter module is the Tyco Electronics Austin Lynx II # ATA010A0X3-SR which features an adjustable output voltage of 0.75V to 5.0V with a 10 amp output current from a +12V input voltage. There are many other variations of this DC/DC converter module for other input voltages and load currents from any vendor that is part of the DOSA. Within their product families, all DOSA modules are interchangeable and, therefore, second sourced by any DOSA vendor. Appendix B shows the typical voltage setting technique and data sheet trim circuit.

Throughout this application note, the Texas Instruments PTH12050 POLA module and TycoAustin Lynx II # ATA010A0X3-SR DOSA module are shown in the design examples. However, any module which complies with the POLA or DOSA standard should be interchangeable.

It must be noted that POLA modules are not pin compatible with DOSA modules. Also, DC/DC converter modules which are not part of POLA or DOSA may or may not be compatible with DC/DC converter modules from other vendors.

Module trim with software control of a DC/DC converter module output voltage is desirable for several reasons:

1. Margin testing is often required in the engineering qualification test to four-corner test the system against tolerance variations in the DC/DC converter output voltages.
2. Margin testing is often performed as part of production final system tests.
3. Margin testing can be done as part of a regular in-field preventative maintenance test to attempt to predict a system failure.
4. As the core voltage requirement of controllers, gate arrays, etc. change with each new generation of devices it is helpful to be able to perform software changes of output voltage instead of requiring an ECO to change a resistor value.

POLA Modules DCP Circuit and Table of Resistors Values

Figure 1 and Tables 1, and 2 show the circuit for interfacing POLA modules to a DCP. For high output voltage (1.2V to 5.5V) POLA modules (PTH12050W) the circuit and tables show the external resistor values (Rw, Ry) for an ISL95810UIU8 256 tap, 50K DCP. The ISL95810UIU8 DCP allows an adjustment range of nominal Vout $\pm 10\%$ by changing the DCP code from full scale value (255₁₀) to zero value (000₁₀). The complete circuit analysis, circuit model, and design equations are shown in Appendix C and Appendix D.

For low output voltage (0.8 to 1.8V) POLA modules (PTH12050L) Table 2 shows the external resistor values (Rw, Ry) for an ISL95810UIU8 256 tap, 50K DCP.

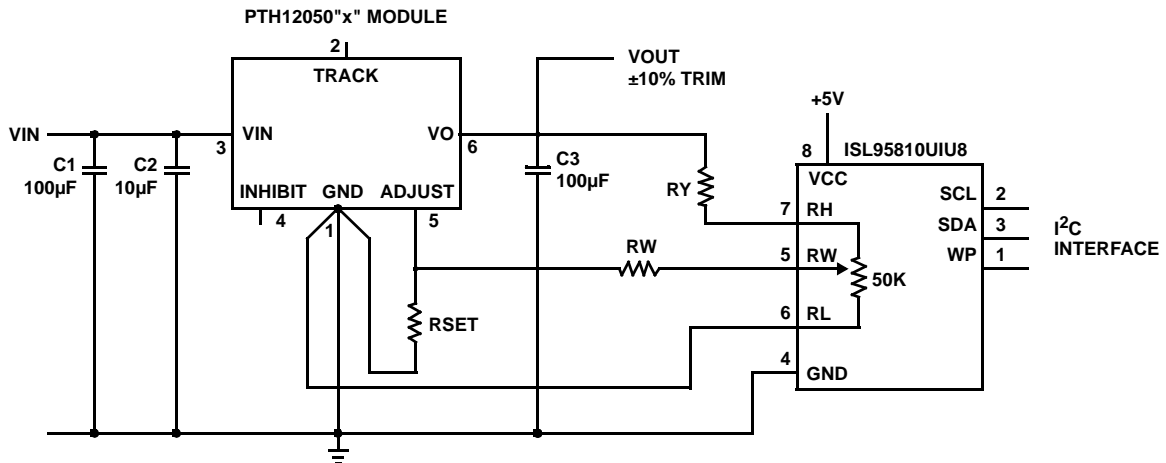
TABLE 1.

NOMINAL VOUT (VDC)	MINIMUM VOUT (VDC)	MAXIMUM VOUT (VDC)	Rset (Ω)	Rw (Ω)	Ry (Ω)
3.3	3.000	3.600	1.69K	14.3K	8.06K
2.5	2.250	2.750	3.83K	26.1K	2.49K
1.8	1.620	1.980	11K	36.5K	511
1.5	1.372	1.651	26.7K	39.2K	0

Minimum Vout at Full Scale Code
 Nominal Vout at 1/2 Full Scale Code
 Maximum Vout at Zero Code

TABLE 2.

NOMINAL VOUT (VDC)	MINIMUM VOUT (VDC)	MAXIMUM VOUT (VDC)	Rset (Ω)	Rw (Ω)	Ry (Ω)
1.5	1.350	1.650	2.61K	3.74K	6.65K
1.2	1.080	1.320	11.5K	21.5K	422
1.0	0.900	1.100	44.2K	32.4K	0



"x" indicates W-suffix for 1.2 - 5.5V Module.
 "x" indicates L-suffix for 0.8 - 1.8V Module.

FIGURE 1.

DOSA Modules DCP Circuit and Table of Resistors Values

For DOSA modules (Tyco Austin Lynx II, # ATA010A0X3-SR) Figure 2 and Table 3 show the external resistor values (Rw, Ry) for an ISL95810UIU8 256 tap, 50K DCP. The ISL95810UIU8 DCP allows an adjustment range of nominal Vout ±10% by changing the DCP code from full scale value (255₁₀) to zero value (000₁₀). The complete circuit analysis, circuit model, and design equations are shown in Appendix C and Appendix E.

TABLE 3.

NOMINAL VOUT (VDC)	MINIMUM VOUT (VDC)	MAXIMUM VOUT (VDC)	Rtrim (Ω)	Rw (Ω)	Ry (Ω)
5.0	4.500	5.500	1.27K	26.1K	7.87K
3.3	3.000	3.600	2.87K	47.5K	4.32K
2.5	2.250	2.750	4.64K	51.1K	1.96K
1.8	1.620	1.980	8.66K	59K	309
1.5	1.372	1.651	12.7K	68.1K	0
1.2	1.080	1.320	23.7K	66.5K	0

Minimum Vout at Full Scale Code
 Nominal Vout at 1/2 Full Scale Code
 Maximum Vout at Zero Code

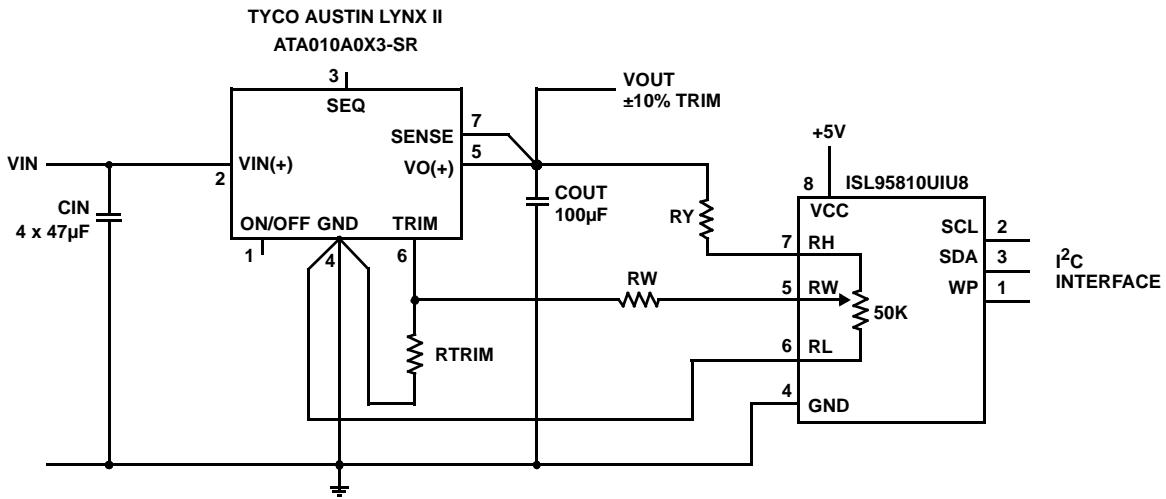


FIGURE 2.

Example of Vicor DC/DC Converter Modules

For Vicor Generation 2 modules (#V48C5C100B for example) Figure 3 and Table 4 show the external resistor values (R_w , R_y) for an ISL95810UIU8 256 tap, 50K DCP. The ISL95810UIU8 DCP allows an adjustment range of nominal $V_{out} \pm 10\%$ by changing the DCP code from full scale value (255_{10}) to zero value (000_{10}). The complete circuit analysis, circuit model, and design equations are shown in Appendix F.

TABLE 4.

NOMINAL VOUT (VDC)	MINIMUM VOUT (VDC)	MAXIMUM VOUT (VDC)	Rpot End-End (Ω)	R_w (Ω)	R_y (Ω)
5.0	4.500	5.500	50K	9.09K	17.4K

Discrete DC/DC Converter Circuits Using Intersil Monolithic 2A Step-Down Regulator IC

The same technique for using a DCP to trim the output voltage of a DC/DC converter module can also be applied to a discrete DC/DC converter circuit as shown in Figure 4. The EL7532 circuit is set for a nominal output voltage of 1.8V. The ISL95810UIU8 DCP allows an adjustment range of 1.62V to 2.00V ($1.8V \pm 10\%$) by changing the DCP code from full scale value (255_{10}) to zero value (000_{10}). The circuit analysis for the output voltage vs code is similar to the analysis for the POLA or DOSA module as described in the Appendix C, and is available upon request.

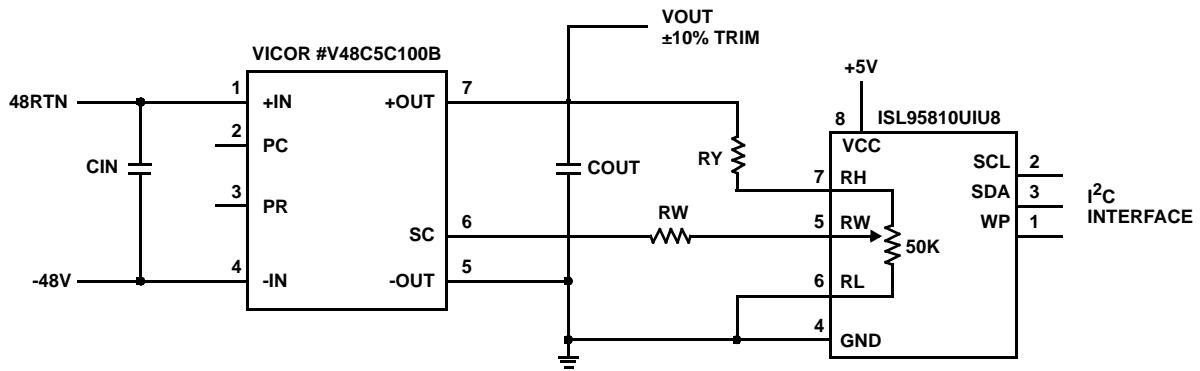


FIGURE 3.

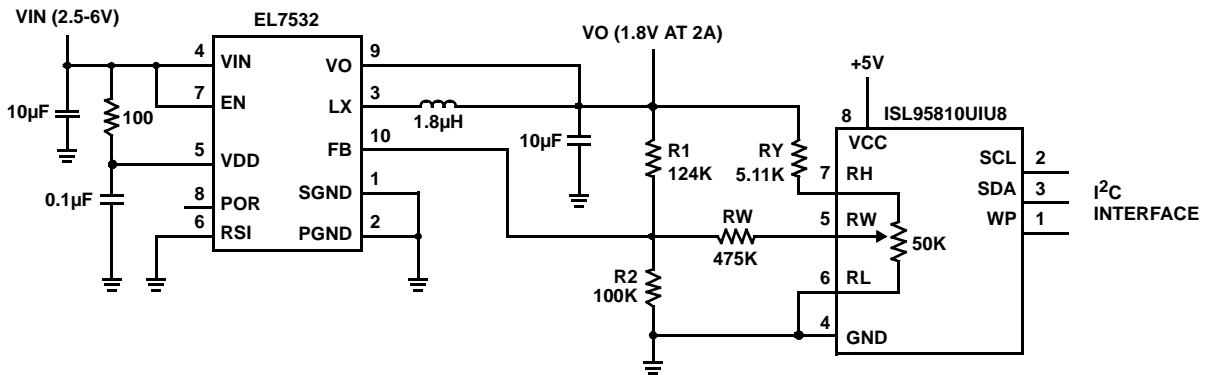


FIGURE 4.

Appendix A: Standard POLA Output Voltage Settings and Trim

To set the output voltage of a POLA DC/DC converter module, an external resistor, Rset, is added from the Adjust pin to the GND pin as shown in Figure 5. With the TI #PTH12050 DC/DC converter module there are two parts - one for high output voltage (1.2V-5.5V) indicated by a W suffix, and a second for low voltage (0.8V to 1.8V) indicated by an L suffix.

$$R_{set} = 10K / (V_o - V_{min}) - R_s$$

Where V_o = Desired output voltage

V_{min} = 1.2V for W-suffix part

= 0.8V for L-suffix parts

R_s = 1.82kΩ for W-suffix parts

= 7.87kΩ for L-suffix parts

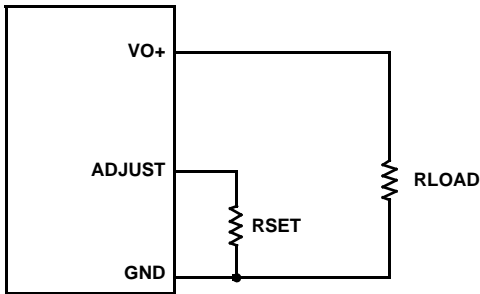


FIGURE 5. POLA OUTPUT VOLTAGE SET CIRCUIT

Output voltage margining is implemented by adding external resistors for margining up (Rmargin-up) and margining down (Rmargin-down); the resistors are connected into the Trim pin with external N-channel FETs Q1 and Q2. With this technique only three output voltages can be set; nominal (both Q1 and Q2 off), margin up output voltage (Q1 on), and margin down voltage (Q2 on). No intermediate voltage steps are available.

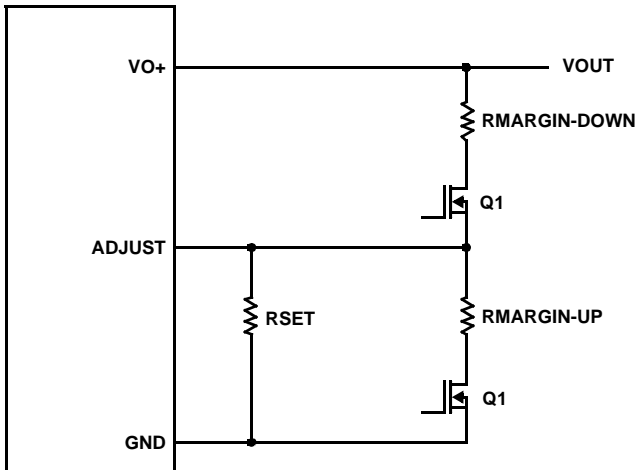


FIGURE 6. POLA MARGIN CIRCUIT

Other POLA modules (PTH12060W) include Margin Up and Margin Down pins for ±5% output voltage margining. However, they require external FETs for controlling the Margin Up and Margin Down pins.

Replacing the two resistors and FETs with a digital pot (DCP) allows a large number of output voltages to be set under software control. It will be shown in the next section that the range of the output voltage can be set with two fixed resistors connected to the DCP wiper and top terminal.

Appendix B: Standard DOSA Output Voltage Settings and Trim

To set the output voltage of a DOSA DC/DC converter module, an external resistor, Rtrim is added from the Trim pin to the GND pin as shown in Figure 7.

$$R_{trim} = 10500 / (V_o - 0.7525) - 1000$$

Where V_o = Desired output voltage

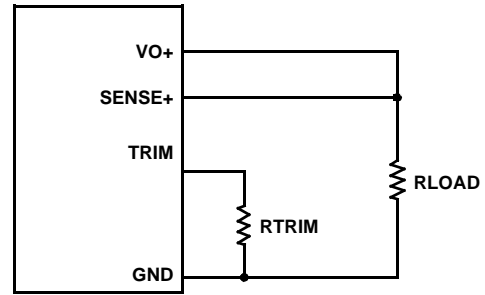


FIGURE 7. DOSA OUTPUT VOLTAGE SET CIRCUIT

Output voltage margining is implemented by adding external resistors for margining up (Rmargin-up) and margining down (Rmargin-down); the resistors are connected into the Trim pin with external N-channel FETs Q1 and Q2. With this technique only three output voltages can be set; nominal (both Q1 and Q2 off), margin-up output voltage (Q1 on), and margin-down voltage (Q2 on). No intermediate voltage steps are available.

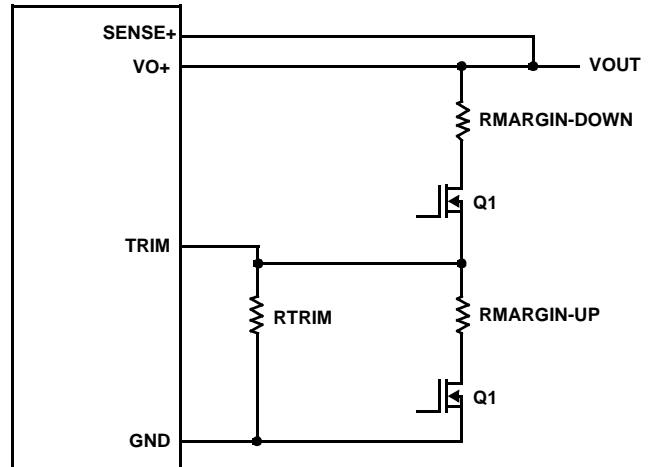


FIGURE 8. DOSA MARGIN CIRCUIT

Replacing the two resistors and FETs with a DCP allows a large number of output voltages to be set under software control. It will be shown in the next section that the range of the output voltage can be set with two fixed resistors connected to the DCP wiper and top terminal.

Appendix C: POLA and DOSA DC/DC Converter Circuit Model and Design Equations

To use a DCP for controlling the output voltage of a DC/DC converter module it is necessary to obtain a circuit model of the feedback circuit internal to the DC/DC converter module. Some DC/DC converter module vendors show the circuit model on their data sheets or application notes. If the circuit model is not available, it is necessary to derive the model from the output voltage vs adjust resistor equation.

The output voltage of a POLA or DOSA DC/DC converter module can be adjusted for trimming and margining purposes by using the circuit in Figure 9. Resistor R_w sets the width of the adjustment range, and resistor R_y is used to center the adjustment range around its nominal output with the DCP set to midscale. Because the DCP presents a "load" to the feedback network, the resistance of both sides of the DCP must be considered.

For analysis, the equivalent circuit with node assignments is used (Figure 10).

Summing Currents at Each Node:

$$\begin{aligned} (V_o - V_r)/R_1 + (V_1 - V_r)/R_s + (0 - V_r)/R_2 &= 0 && \text{(Node } V_r) \\ (V_r - V_1)/R_s + (V_2 - V_1)/R_w + (0 - V_1) \text{ Radj} &= 0 && \text{(Node } V_1) \\ (V_o - V_2)/R_t + (V_1 - V_2)/R_w + (0 - V_2)/R_b &= 0 && \text{(Node } V_2) \end{aligned}$$

For a DCP

$$\begin{aligned} R_{bot} &= R_{ee} * Code/N \\ R_{top} &= R_{ee} - R_{bot} \\ \text{Where } R_{ee} &= \text{DCP end to end resistance} \\ \text{Code} &= \text{Digital input code (0 to N)} \\ N &= \text{Number of taps} \end{aligned}$$

Solving for V_o :

$$\begin{aligned} V_o &= V_r * (X - R_1/(B * D * R_s^2)) / (1 + E * R_1/R_s) \\ \text{Where } X &= 1 + R_1/R_s + R_1/R_2 \\ B &= 1/R_s + 1/R_w + 1/R_{adj} \\ C &= 1/R_t + 1/R_w + 1/R_b \\ D &= 1 - 1/(B * C * R_w^2) \\ E &= 1/(B * C * D * R_w * R_t) \\ R_t &= R_{top} + R_y \end{aligned}$$

Since this is a very messy non-linear equation, an Excel worksheet was prepared to calculate the DC/DC converter module output voltage with a given DCP digital code. The Excel worksheet is provided by the following link http://www.intersil.com/data/an/AN1173_Module_Trim_with_Ry.xls.

In addition to the Excel worksheet, to calculate the output voltage with a DCP code, R_w , and R_y resistor values, the three node equations were programmed into TK Solver (Universal Technical Systems). TK Solver has the ability to back solve a set of equations with any variable being set as an input or output variable. The TK Solver rules sheet is available upon request.

A SPICE simulation could also be used to calculate the output voltage with a DCP input code; however, SPICE does not provide the ability to calculate resistor values. SPICE could only be used to verify the circuit analysis and calculate the output voltage with a DCP input code

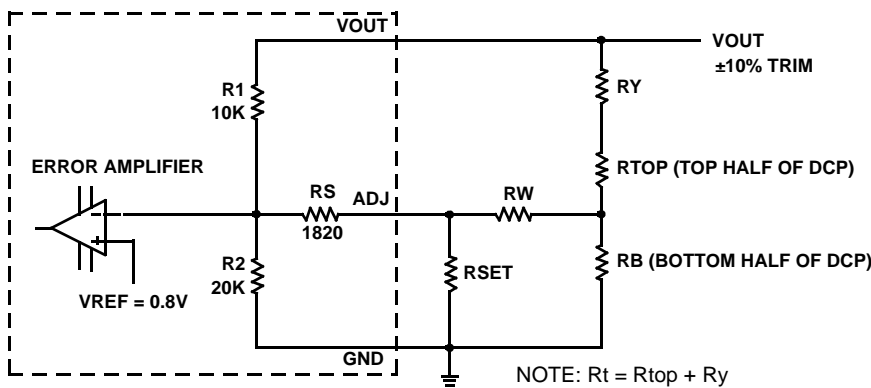


FIGURE 9. POLA MODULE CIRCUIT MODEL WITH DCP

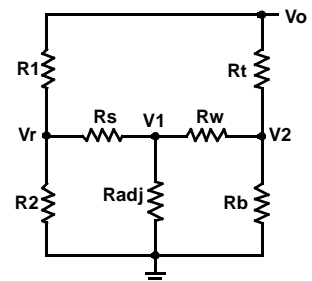


FIGURE 10.

**Appendix D: POLA DC/DC Converter
Circuit Model**

The POLA DC/DC converter module circuit model high output voltage parts is shown in Figure 11.

For low output voltage (0.8V to 1.8V) POLA DC/DC converter module, resistor R2 (20K) is removed and Rs value is changed to 7.87K; the circuit model is shown in Figure 12.

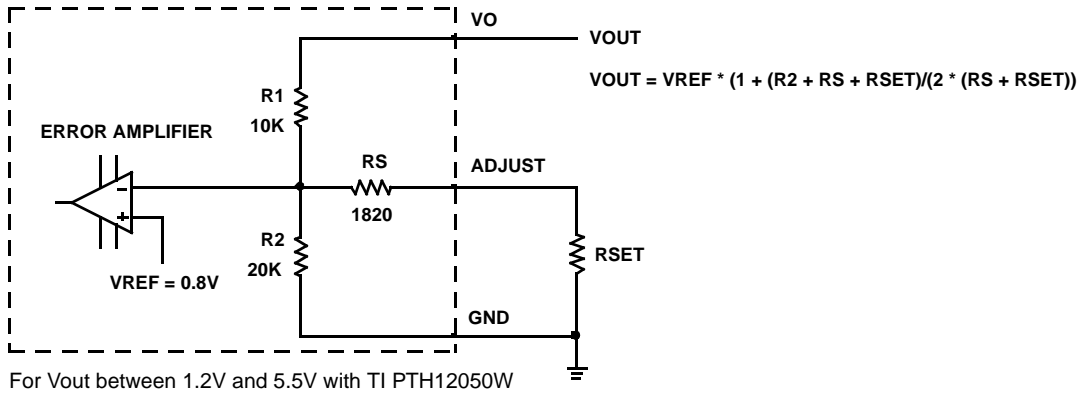


FIGURE 11.

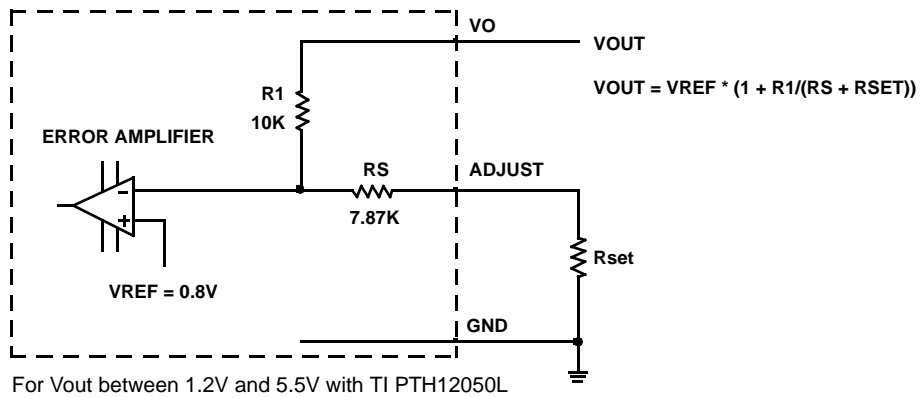


FIGURE 12.

